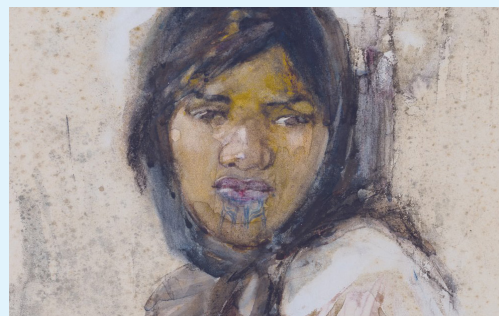


# Mahara Gallery

Kāpiti Coast District Gallery

## MAHARA GALLERY CHARITABLE TRUST BOARD

### ANNUAL REPORT 2016-17



20 Mahara Place, Waikanae 5036  
PHONE: 04 902 6242  
EMAIL: [info@maharagallery.org.nz](mailto:info@maharagallery.org.nz)

# Mahara Gallery



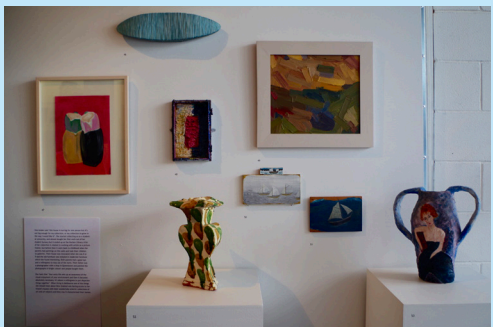
20 exhibitions

59 public programmes

318 Kāpiti artists featured

12,513 visitors

\$47,000 raised in special project grants





# Mahara Gallery

## Kāpiti Coast District Gallery

The Mahara Gallery is the district public gallery for the Kāpiti Coast. It was founded by artists and volunteers as a charitable trust in 1996.

The gallery operates out of the original Waikanae library building, provided by the Kāpiti Coast District Council. It receives funding from the Council to cover operational costs and further private financial support for special projects.

The exhibition programme balances quality local and national content, works in partnership with local iwi and reflects the strengths and diversity of the Kāpiti arts community.

Currently the gallery employs 1.8 full-time equivalent staff including Museum Director- Curator, Janet Bayly. Their work is supplemented by volunteers and the Friends of Mahara.

Governance is provided in the form of a six person Board chaired by Professor Les Holborow. The Kāpiti Coast District Council is represented on the board and also Te Atiawa, Ngati Raukawa and Ngati Toa. Other Board members bring a mix of business, media and specialist skills.

Board: John Mowbray (Chairman), Queenie Rikihana-Hyland, Kevin Ramshaw, Gordon Shroff, Janet Holborow.

Staff: Janet Bayly (Director/ Curator), Amanda Smart (Administrator / Designer).

# Mahara Gallery

## CHAIRMAN'S INTRODUCTION

---

From an artistic perspective, the 2016-17 year was extremely satisfying in that the Gallery was able to maintain the quantity and quality of exhibitions achieved in recent years. However, in terms of making progress on the now long-established project to expand the Gallery and bring its infrastructure up to museum standard, it was disappointing.

Mahara Gallery continues to do a remarkable job as the Kāpiti Coast District Gallery in spite of the constraints that limited space, resources and a small staff impose. Twenty exhibitions during the year equals last year's record-setting number and is more than three times the number required under the terms of our Partnership Agreement with Council. More than 300 local artists had the opportunity to showcase their work in the District Gallery.

But the Gallery is more than a venue for exhibitions. During the year we hosted 59 public programmes, providing an invaluable forum for the development of artistic, critical and cultural thinking. We received 12,500 visitors during the year, a decrease from 2015-16 but still a good result for our scale of operation, and to some extent the result of the reduction in traffic following the opening of the Kāpiti Expressway.

The Board greatly appreciates the work of our Director-Curator Janet Bayly and her small staff in creating an exhibition programme that achieves multiple objectives from showcasing the work of local artists, to marking significant cultural milestones like Matariki with the wider community and encouraging children's art through the partnership with the Philipp Family Foundation.

Janet has also maintained the Gallery's commitment to the Field Collection of artworks, 24 of them by Frances Hodgkins. During the year the exhibition, *Frances Hodgkins, an emerging talent*, developed by guest curator, Victoria Robson, earned critical acclaim for its reappraisal of our most celebrated expatriate artist.

In submissions to Council during the year, the Board has made the point that maintaining our exhibition and public events programmes at their current level is placing considerable strain on the Gallery's slender staffing and financial resources. While we accept that we are exceeding the expectations set out for us in the Partnership Agreement with Council, we are conscious of the need to perform to a level expected of a district public gallery, and be responsive to the ongoing demand by artists for opportunities to exhibit their work. Our task is becoming harder year by year as administrative and financial requirements imposed upon us by legislation become more onerous. Cases in point are the more stringent financial reporting requirements imposed by the Charities Commission and increased obligations associated with health and safety legislation. From a financial perspective, the Kaikoura earthquake will significantly increase our basic insurance costs.

With this in mind, the Board has explored during the year options for simplifying our programme of work. One option is to reduce the number of exhibitions offered to artists in the secondary newSPACE gallery and to increase the amount of exposure we give to works from the Field Collection. The aim is to reduce the amount of staff time required to deliver our programme and increase public awareness of the Field Collection. We are continuing to investigate these options.

# Mahara Gallery

For some years, the plan to redevelop Mahara Gallery to house and display the Field Collection has been a significant work stream. In our last annual report, we documented our support for Council's intention to combine Mahara Gallery and the Waikanae library in a new building on a site to be acquired. The disappointment I referred to earlier derives from the delay in identifying and obtaining a site, with the result that the project has not progressed during the year. This is not a criticism of Council which has done all it could to secure a site; rather, it is a function of the complexity of land negotiations.

The delays created anxiety for the third partner to the Gallery Upgrade Agreement, the Field Collection Trust. It led to them serving notice that if progress could not be achieved within 12 months, they would initiate a search for alternative accommodation for the collection outside Kāpiti. Having been held here for over 100 years, the loss of this collection would be a significant cultural and economic setback for the Kāpiti Coast District.

The outcome of the Council's site negotiations falls outside the period under review, but it is appropriate to record that for reasons associated with its inability to secure the site identified and the added costs associated with any other site, Council has deferred planning for a combined facility. In doing so, it has retained budgeted funding within its Long Term Plan for the Gallery Upgrade, enabling the Board to return to a plan for an upgrade on the existing site. During the 2017-18 year, the Board's priority will be working towards this outcome. We will be seeking to achieve this within a time-frame that ensures the Field Collection is secured for Mahara Gallery.

I am pleased to report that during the year, we were able to release our Director-Curator to undertake a six-week sabbatical in Britain, Europe and the United States. Janet's report to the Board following her return indicated that the time away was beneficial for her personally and also advantageous in term of the contacts she made in relation to Frances Hodgkins. We are extremely grateful to *Te Paerangi National Services* for making Victoria Esson available to maintain a watching brief on the Gallery while Janet was away. We would also like to record our thanks to Victoria for her help and co-operation in providing support and advice on a range of other issues. In particular, the Board benefited from workshops on governance that Victoria facilitated as we seek to identify the best governance model for our future.

The Board is grateful to Janet, Amanda Smart and the volunteers who make Mahara Gallery the success that it is. Janet has recorded ten years of service as Gallery Director-Curator. Her knowledge, professionalism and commitment over these years have been tremendous assets, not only to Mahara Gallery but the Kāpiti district and wider Wellington region.

The Board would also like to record its appreciation of the contribution made by Kāpiti Coast District Council both in terms of its funding support and the co-operation we have received as part of the Gallery Redevelopment Project. In particular we extend our thanks to Council officials Wayne Maxwell (Group GM Corporate Services), Max Pedersen (Group Manager Corporate Services) and Jaenine Parkinson (Arts, Museums and Heritage Adviser). We are also deeply grateful for the ongoing support of the Field Collection Trust, the Philipp Family Foundation, the Deane Endowment Trust and the Waikanae Community Board, who have yet again enabled us to deliver publications, major projects and events that would not have been possible otherwise, and which have greatly extended our contribution to Kāpiti and the wider arts community around New Zealand.

# Mahara Gallery

During the course of the year, our Chairman for a number of years, John Mowbray, opted to step down and I was elected to fill the role. On behalf of the Board, I would like to extend our thanks to John for his service and record our gratitude at his agreeing to remain with us as a Board member. Also during the year, Gordon Shroff agreed to join the Board as a trustee. Gordon's experience in Government and his experience as a past Chairman of the Friends of Te Papa Tongarewa, Museum of New Zealand, will be invaluable as we face the challenges of the future.

Les Holborow

A handwritten signature in black ink, appearing to read 'L. Holborow', written in a cursive style.

Chairman

# Mahara Gallery

## DEVELOPING AND FOSTERING THE PRACTICE AND APPRECIATION OF THE ARTS IN KĀPITI AND CREATING AN ENJOYABLE, COST-EFFECTIVE VISITOR EXPERIENCE.

---

Within a very busy programme of 20 exhibitions featuring 318 Kāpiti artists in the past year Mahara Gallery has delivered a range of engaging cultural and learning experiences to diverse communities of interest which have delivered on our partnership agreement with Council, within which four key themes and projects are repeated annually. Within our single-space building, we have also hosted twelve group and solo shows dedicated to local artists. This has delivered a constantly changing and lively programme that engaged with the Kāpiti arts and wider community, and promoted the district's public gallery as a high quality visitor destination.

**Eight main gallery shows included:**

*MIRO; Matariki at Mahara*

Supported by WAF, the Deane Endowment Trust & Waikanae Community Board

*Contemplations of space, eight decades on; Anton Maurer and George Chance;*

Developed by McNamara Gallery Photography

*Te Whenua, the land; Paraparumu Beach children's creations;*

Supported by the Philipp Family Foundation

*Kāpiti Artist's Focus;*

*The collecting passion, from Pablo Picasso to Sue Soo;*

*Bob Brockie, 60 years of drawing the line;*

*An Emerging Talent, early works by Frances Hodgkins;*

Supported by the Deane Endowment Trust & Field Collection Trust

*Matariki Dawn, an installation by Michel Tuffery and Yvonne de Mille;*

Supported by WAF, the Deane Endowment Trust, Waikanae Community Board & Creative Communities Scheme.

Twelve group and solo shows in our other smaller spaces, are listed under Objective 5.

We also travelled the Mahara Gallery and Council brand around New Zealand in 2016-2017, evidence of our reputation for developing good shows. *Young Country*, curated by poet Kerry Hines and developed with support from Mahara Gallery, was launched here with a publication by AUP in 2014, and has toured art museums nationally through 2016-2017. We facilitated a *Sue Soo* exhibition going to Tivoli Gallery, Auckland in January, curated from her archives held at Mahara Gallery; then toured the *Bob Brockie* show there, retitled *Bob Brockie Cartoonery*, in April.

# Mahara Gallery

## TREASURING MAORI ARTS AND CULTURAL EXPRESSION

---

Maori arts and cultural expression formed a particular strength of our programme throughout this year. This included two major exhibitions and public programmes for Matariki which book-ends our annual report between June 2016 and July 2017; the presentation of many leading Maori weavers in *MIRO*; and two solo exhibitions of weavers with iwi affiliations to Te Atiawa ki Whakarongotai for their Master of Maori Visual Arts from Te Putahi a Toi, Massey University.

The Matariki season which celebrates Maori New Year across June and July has become a popular and increasingly important part of our annual exhibition programme since we first began it in 2014, which the Kāpiti community responds strongly to. While the basic themes of remembering, renewal and community-based celebrations and learning have remained at the core each year, the groups we partner with and the character of the festival have changed slightly each year. In 2016 the programme developed with Whakarongotai marae started on 2 June and ran to 3 July. The whole show attracted 2,959 visitors, most in June but falling within the period of this annual report. It included *MIRO*, curated by Pip Devonshire and Tracey Morgan, featuring leading national and international weavers from across greater Wellington; and *Aroha Mai, Aroha Atu* featuring photographic portraits of kaumatua from this rohe made by young people in Nga Kakano, supported by youth organization ZEAL. Both exhibitions were very well received.

For *Matariki at Mahara 2017* we worked more closely with Waikanae Library and presented four special performance events from Te Papa in the gallery, Mahara Place and at Kapanui School, Waikanae. Total visitation over the seven weeks of the show increased to 3,745, with 2,293 of those coming in June. This is an ambitious project for Mahara to deliver on its small staff and is dependent on wide community support and extra outside funding. It has benefitted by being part of the greater Wellington consortium of museums and galleries which has been funded by WAF.

Our Matariki exhibition for June-July 2017 was *Matariki Dawn*, an installation by Otaki-based, nationally-known textile artist, Yvonne de Mille, who collaborated with highly regarded Pacific and Maori artist Michel Tuffery (MNZM) on a manu aute (Maori kites) project. She also delivered four lantern-making workshops which culminated in a lantern walk with families around Mahara Place on June 16 and was a highlight of our festival weekend of events. Whakapapa quilt-maker Ron Te Kawa led the lantern parade then presented a Matariki puppet show in the gallery. A Matariki cloak made with recycled materials by 100 Kāpiti schoolchildren and environmental artist JoAnna Mere was a popular artwork within the gallery. Our Matariki projects in both 2016 and 2017 also benefitted from further grants from the Deane Endowment Trust, Creative Communities Scheme and Waikanae Community Board. These enabled us to deliver extra lighting displays throughout Mahara Place, support musicians and other artists performing in the gallery, and kapahaka by school children and kaumatua both inside and outside the gallery. For *Matariki Dawn 2017* Michel Tuffery also made a new artwork inside the gallery window which has become an attractive permanent installation. It links to the Matariki Maori New Year project which he undertook with Wellington schools in 2016 which was awarded the prestigious Saatchi Gallery Art Prize for Schools 2017 in London during his exhibition at Mahara Gallery.

# Mahara Gallery

## DEVELOP AND GROW THE IDENTITY OF KĀPITI THROUGH REGIONAL PARTNERSHIPS IN THE ARTS

---

Our second special annual project is the Mahara-Nga Manu children's art and environment project, which has been generously funded by the Philipp Family Foundation for the past six years and delivered in partnership with Nga Manu Nature Reserve and Kāpiti schools. This has enabled us to work with around 120 - 180 children each year in a highly focused programme spanning several months, which delivers several high quality outcomes featuring all of the children's work. This innovative project spans environmental science and art, builds individual and community wellbeing and extends our community and education partnerships and audiences each year.

The theme *Te whenua, the land* was offered to Paraparaumu Beach School in 2016. Six classes of 160 children made a whole daytrip on buses supplied to Nga Manu Nature Reserve and Mahara Gallery, with a workshop developed by Nga Manu staff and Queenie Rikihana Hyland telling Maori creation stories and stories of land in Kāpiti at Mahara. This was followed up by classroom workshops led by professional artist Michelle Backhouse, poet Lindsay Rabbitt and rap artist Dean Hapeta. The resulting artworks were all professionally displayed in the gallery, with the exhibition opened by Jan Logie MP in August, accompanied by a short film produced by Kia Kaha Productions with poets reading their work. A 72-page book reproducing all the artwork and poems was designed by Amanda Smart and published in September. 24 awards were made to children and each received a copy of the book. School syndicate leader Kaye Gilman wrote: 'It has been a wonderful experience for students, teachers and parents alike'. Work on the 2017 project, *He Kakano, Seed*, started in June with Raumati South School.

- PROMOTE THE DISTRICT'S PUBLIC GALLERY AS A HIGH QUALITY VISITOR DESTINATION

A third stream to our annual work programme is a heritage-based focus on Frances Hodgkins and the Kāpiti-based Field Collection, realized in four projects in 2016-2017: a lecture series, two exhibitions, a calendar and a publication. These projects were all linked to our work on the gallery redevelopment project and enabled us to tell new stories and grow awareness around the collection of 44 works, 24 of them by Frances Hodgkins, which has been offered to Mahara Gallery as its permanent home.

Dr. Pamela Gerrish Nunn delivered five visual lectures on different aspects of Frances Hodgkins' work between early June and August, funded from the WAF grant, which were very well received. Director Janet Bayly curated *Frances Hodgkins and Girolamo Nerli, Early Years* from the Field and Avenal McKinnon loan collections for Discover Kāpiti Heritage Month in September, extended by a floortalk.

We contracted independent curator Victoria Robson to develop *An Emerging Talent, the early work of Frances Hodgkins*, which resulted in a new essay published in a catalogue also reproducing all of the images, funded by grants from WAF and the Deane Endowment Trust. We were given privileged access to eight works for *An emerging talent, early works by Frances Hodgkins* from an extended group of family descendants of the Fields. These loans were a major project to manage, but enabled us to exhibit and reproduce works that had not been seen in public for over 100 years. In the process we facilitated conservation reframing and professional photography of the work which yielded valuable information about some artworks and saved some from further deterioration. The project added new knowledge to scholarship on Frances Hodgkins and attracted over 2,000 visitors, including cultural tourists from around New Zealand during its eight week showing, with a free ad offered by The International Art

# Mahara Gallery

Centre, Auckland, for their current auction catalogue, and ads in *ArtZone* and Wellington's *Capital*. The exhibition was mounted during Frances Hodgkins' birthday month, and Victoria Robson delivered a special lecture on Hodgkins' birthday, April 28, which attracted a full house.

Critic Peter Ireland wrote, '... The Mahara Gallery has made a bold and unexpectedly refreshing attempt to shift the focus to Hodgkins as an emerging artist, both in Dunedin and fresh off the boat in Europe, giving a decided New Zealand perspective on the artist's origins' ... 'the presence of the actual work encourages an immersion in the technique, which in the case of *An Emerging Talent* is a revelation'.

<http://www.eyecontactsite.com/2017/06/local-girl-makes-good>

As participants in the *Discover Kāpiti Heritage Group* we offer the professional design skills of the gallery's administrator, Amanda Smart, which enhances the presentation of the group's projects as well as every project and publication within the gallery. Amanda's design skills and board member Kevin Ramshaw's media skills enable us to engage very actively with regional initiatives to promote the arts, and to market Mahara Gallery's programme effectively locally, regionally and nationally.

# Mahara Gallery

## IMPLEMENTATION OF THE COUNCIL'S STRATEGY FOR SUPPORTING THE ARTS (2012)

---

The director participates actively in providing advice to Council on arts strategy and policies, including Public Art through the Public Art Panel. She also contributes regularly to the *Discover Kāpiti Heritage Group*.

The gallery has continued to deliver a very busy exhibition and work programme alongside work on the gallery redevelopment project, with a fulltime staff of only two, supported by a voluntary board and around 20 regular gallery volunteers. We have been very grateful for a grant in the past year from *Wellington Amenities Fund* for operational support and work underpinning the redevelopment project, and to *Te Paerangi National Services* for their support in various ways.

NSTP Manager Victoria Esson ran a governance discussion in August to consider options facing a redeveloped Mahara Gallery housing the Field Collection. She stepped in as acting director to enable gallery director Janet Bayly to take six week's leave overseas from early September to late October 2016. This included a week in Cornwall, U.K., exploring Frances Hodgkins-related sites, archives and artist's residencies at St Ives and Penzance, followed by two weeks in France and two weeks in the United States, including visiting new gallery developments and artist's residencies.

The WAF grant ran until December 2016 and enabled us to strengthen our operational capacity in IT; to redevelop the website for better access to the gallery; to produce new design materials, collateral information and images to support the redevelopment project; and to research artist's residencies.

Mahara hosted an NSTP workshop for lower North Island museum workers on Art Care and Handling in March 2017. It enabled us to offer free spaces to several of our own and other local museum volunteers, thereby strengthening the wider Kāpiti museum sector. In February Amanda and Angelique attended an NSTP workshop on Collection Management at the Dowse Art Museum. We made a staff trip to Whanganui for a tour of the Sarjeant on the Quay's new collection store with Collections Curator, Jennifer Taylor-Moore, and tours by education staff of their workshop space and programmes.

We took part in the *Museums Aotearoa National Visitors Survey 2017* which provided excellent comparative statistics for future funding applications. Our visitors report ongoing high levels of satisfaction on with their experiences with us. We also participated in the *Aotearoa National Museums Sector Survey*.

Mahara staff attended the *Museums Aotearoa Conference* in May 2017 supported by grants from Museums Aotearoa and NSTP. NSTP have also advised and assisted us to renew our 20 year old lighting track and fittings which was very deteriorated and in urgent need of replacement. The new track can be taken into the redeveloped gallery and has already refreshed our exhibition spaces.

The director raised a further grant from the *Philipp Family Foundation* for an education-focused role which started in late May to support future education programming and extension of exhibitions.

Despite a positive response to all of our shows, gallery visitation was quieter than usual through the second half of 2016, with ongoing roadworks, regular delays on SH1, and parking pressures in Waikanae village leading up to the closure of the nearby highway in December 2016. We have engaged

# Mahara Gallery

with council and the local business group to try and mitigate the effects of the new Kāpiti expressway now running 5 kms west of the gallery. We feel optimistic that recent signs of increased activity, visitors and new businesses opening in Mahara Place in the second half of the year will prove that the village remains a vital community, cafe and cultural centre with a lively district gallery at its heart.

# Mahara Gallery

## PROMOTING AND ENCOURAGING LOCAL ARTISTS AND COMMUNITY ENGAGEMENT WITH, ACCESS TO & LIFELONG LEARNING ABOUT THE ARTS

---

The fourth stream to our annual work programme is supporting and presenting local artists in a range of exhibitions. Each year we develop a show focused solely on surveying local artists and creating opportunities for artists at all levels to show their work in the gallery, with artist's awards attached. Since 2015 we have alternated this larger open entry show with a more focused and curated group exhibition. In 2016 eight Kāpiti artists were invited for *Kāpiti Artist's Focus* which ran during the Kāpiti Arts Trail, with supporting events. The show spanned emerging to mid-career to senior artists working across a wide range of media and concerns, each presenting a bigger group of work. One of the youngest artists, Katie Sampson, attracted national and international media interest, while Sebastien Jaunas was recently selected for the prestigious Wallace Art Awards.

A further twelve solo and smaller group shows were presented in our new SPACE galleries:

Whitireia graduate Birgit Moffatt presented her degree exhibition *Topophilia, Love of land*, which was the result of 500 people stitching leaves in workshops delivered by the artist across Kāpiti libraries and community centres in the previous months, and proved to be a delightful community-generated installation.

Eight photographers from the Kāpiti Photographic Society showed portraits of local identities in *Living in Kāpiti*, which generated strong community interest.

Te Atiawa ki Whakarongotai weaver Brenda Tuuta presented *Manawaroa/Resilience*, as part of her study towards her Master's degree from Te Putahi a Toi, Massey University.

Leading weaver of national and international experience from Te Atiawa ki Whakarongotai, Tracey Morgan showed *Whanaketanga/Evolution*, her final exhibition for her Master of Maori Visual Arts from Te Putahi a Toi, Massey University, opened by Waana Davis, Chair of Toi Maori Aotearoa.

Kāpiti-based Mizuho Nishioka followed in new SPACE showing contemporary photographic work in *Machine Time\_NatureTime* made for the first PhD in photography at Massey University School of Fine Arts.

Alongside *An Emerging Talent* in new SPACE was Kāpiti artist and teacher Lynda Mapplebeck, in *Liminal*, followed by *Lynnette Rawlingson, Paintings*, whose art career spanned early training at Wellington Design School through to much-loved paintings of iconic Kāpiti landscapes loaned by local people.

30 children's works were submitted for the Guardians of the Kāpiti Marine Reserve logo competition in June was judged and awards presented by Mayor K. Gurunathan and iwi representative and Kāpiti Island resident Karl Webber.

Environmental jeweller JoAnna Mere and 100 Kāpiti schoolchildren created the *Matariki Cloak, Kahupatariki*, shown for Matariki at Mahara.

# Mahara Gallery

## APPENDIX

The following information is aligned to the Council objectives, services, and performance targets as set out in the Partnership Agreement 2014/2017.

- 1. To develop and foster the practice and appreciation of creative arts in the Kāpiti Coast community and to create an enjoyable and cost-effective visitor experience that enriches the understanding and the meaning of art, especially the visual arts.**

*Service: Present an annual exhibition programme that engages with the Kāpiti arts and wider community.*

*Target: At least six exhibitions per year. Maintenance or increase of annual visitor numbers.*

### The following exhibitions have been staged during the report period:

- 1) *(Continued) MIRO, Weavers from Te Awahou to Te Upoko o te Ika a Maui;*  
*new SPACE: Aroha Mai, Aroha Atu*  
*1 July - 3 July 2016*  
*Attendance: 127*
- 2) *Contemplations of place, eight decades on: George Chance & Anton Maurer.*  
*Developed by McNamara Photography Gallery*  
*new SPACE: Topophilia: Birgit Moffatt*  
*9 July - 21 August*  
*Attendance: 1272*
- 3) *Te Whenua, the land, Mahara Gallery and Nga Manu children's art and environment project.*  
*new SPACE: Frances Hodgkins and Girolamo P. Nerli, Early Years*  
*27 August - 9 October*  
*Attendance: 1371*
- 4) *Kāpiti Artist's Focus: Sara Boland, Dante Kennedy-George, Liz Earth, Harriet Bright, Sebastien Jaunas, Graeme Hitchcock, Katie Sampson, Kimbra Taylor*  
*#1 new SPACE: Living in Kāpiti: Kāpiti Coast Photographic Society*  
*#2 new SPACE: Manawaroa/ Resilience: Brenda Tuuta*  
*15 October - 4 December*  
*Attendance: 2054*
- 5) *The collecting passion, from Pablo Picasso to Sue Soo*  
*11 December 2016 - 5 February 2017*  
*Attendance: 1781*
- 6) *Bob Brockie, 60 years of drawing the line*  
*19 February - 2 April 2017*  
*#1 new SPACE: Tracey Morgan, Whanaketanga/Evolution*  
*19 February - 12 March*  
*#2 new SPACE: Mizuho Nishioka, Machinetime\_Naturetime*  
*14 March - 2 April*  
*Attendance: 1783*

# Mahara Gallery

- 7) *An emerging talent, early work by Frances Hodgkins*  
9 April - 4 June 2017  
#1 new SPACE: *Liminal, Lynda Mapplebeck*  
9 April - 7 May 2017  
#2 new SPACE: *Lynette Rawlingson, Paintings*  
10 May - 4 June 2017  
Attendance: 2224
- 8) *Matariki Dawn, an installation by Michel Tuffery & Yvonne de Mille.*  
*JoAnna Mere Matariki Kahuparatiki*  
new Space: *National Treasure/ Whakapapa Panikoti, Ron te Kawa*  
10 June - 1 July 2017  
Attendance: 1901

Annual Visitor numbers : 12,513

# Mahara Gallery

## **2. Maori arts and cultural expression should be visible and treasured as integral to the life of the District.**

**Service:** Support Maori arts and work with groups to help the whole community see and treasure these.

**Target:** Engage with tangata whenua and matawaka on artbased projects.

**Enhance the relationship between Mahara, tangata whenua and matawaka with reference to the Council's Strategy for Supporting the Arts (2012)**

*MIRO* which was our major exhibition for Matariki Wellington 2016 which finished on 3 July. It included weavers from Te Awahou (Foxton) through to Te Upoko o te ika a Maui (Wellington). It included a strong public programme linking the gallery through Mahara Place to Whakarongotai marae, lighting up the 'cultural thread' linking two centres of culture, heritage and art in Waikanae. In new SPACE, *Aroha Mai, Aroha Atu* told the stories of five kaumatua in the Kāpiti community and was created by Te Puawaitanga o Nga Kakano in photographs and interviews.

Brenda Tuuta, of Te Atiawa ki Whakarongotai, showed *Manawaroa/Resilience* in new SPACE in November, comprised of three woven pou as part of her studies towards her Master of Maori Visual Arts from Te Putahi a Toi, Massey University, Palmerston North. Leading weaver Tracey Morgan, of Te Atiawa ki Whakarongotai marae, who has a national and international reputation and exhibition history, opened her final exhibition *Whanaketanga / Legacy* for her Master of Maori Visual Arts from Te Putahi a Toi, Massey University, Palmerston North, which showed alongside Bob Brockie from late February to early April. The show was blessed by Te Atiawa kaumatua, followed by the official opening at 5pm when Waana Davis (QSM), Chair of Toi Maori, introduced and applauded her mahi.

*Matariki Dawn*, an installation by Michel Tuffery and Yvonne de Mille, showed in the gallery from 10 June to 30 July 2017 for *Matariki Rising 2017*. Quilt maker Ron Te Kawa also showed in new SPACE, and 100 Kāpiti children with artist JoAnna Mere displayed their Matariki cloak in our new education space. Yvonne de Mille's lantern workshops led to a lantern parade for our festival weekend starting on 16 June followed by Ron Te Kawa performing his Matariki puppet show. We delivered another successful community event with a strong family and art-making focus including Te Atiawa histories being told by Queenie Rikihana-Hyland and art workshops in Waikanae Library and Kapanui kapahaka performing in Mahara Place. Te Papa sponsored several performance events including *Timotimo* on June 10. Other events included puppeteer Anna Bailey presenting *Nan and Tuna*, weavers Tracey Morgan and Matthew McIntyre Wilson conducting a *Star Weave Jam* for the *One Million Stars Against Violence* project, and three young musicians who performed through Zeal.

# Mahara Gallery

### 3. Develop and grow Kāpiti's identity through regional partnerships in the arts.

*Service: Promote the District's Public Gallery as a high-quality visitor destination.*

*Target: Engage with regional initiatives to promote the arts. Market Mahara Gallery's programme effectively locally, regionally and nationally.*

Being included in Matariki Wellington each year affords Mahara Gallery further opportunities for building the profile of the gallery with audiences across greater Wellington. Beyond our usual advertising in *Capital* magazine and *ArtZone*, it means we are also included in promotion and advertising on Maori Television, across the NZME network, in a special feature in *The Dominion Post*, on [matarikiwellington.org](http://matarikiwellington.org) and through social media.

The Mahara facebook page has continued to extend its reach and frequency of updates through the year, and is particularly useful for special projects like Matariki.

This being the alternate year for the biennial NZ Arts Festival, Mahara developed *An Emerging Talent, early works by Frances Hodgkins*, with guest curator Victoria Robson. It was supported by the Deane Endowment Trust and offered a floortalk by the curator on Frances Hodgkins' birthday, 28 April, which was very well attended. The International Art Centre ran a free full-page ad for the show in its catalogue for April. Visitors attended the exhibition from greater Wellington and around New Zealand. We also developed a Frances Hodgkins-focused exhibition for Discover Kāpiti Heritage Month in September, which attracted greater Wellington visitors as well as Kāpiti-wide visitors, and further grew our profile as a cultural tourism destination.

For summer Mahara Gallery developed *the collecting passion, from Pablo Picasso to Sue Soo*, involving all staff in the curatorial process. We borrowed artworks and object d'art from seven local collectors and told many stories around the artworks.

# Mahara Gallery

## 4. Implementation of the Council's Strategy for Supporting the Arts (2012).

*Service: Provide professional advice to Council on arts strategy and policies, including Public Art.*

*Target: Participate in the Council's Public Art Panel. Engage with the Council and the Kāpiti community on the Council's priorities for supporting the arts.*

The director and board secretary attended a Te Paerangi National Services workshop on governance and health & safety at the Dowse Art Museum in August. The director participated in the Public Art Panel, and Discover Kāpiti Heritage group on a regular basis. Our contribution to Kāpiti Heritage month alongside Wellington Heritage Promotions was a new show drawn from the Field and Avenal McKinnon collections: *Frances Hodgkins & Girolamo Nerli, Early Years*.

Mahara staff attended a guided tour of The Attic with Wellington Museum of City and Sea curators and assistant director Paul Thompson in December. Administration staff attended Te Paerangi National Services workshop on 'Collection Management' at the Dowse Art Museum in February.

Victoria Esson, Manager of National Services Te Paerangi, offered a governance workshop to the board specific to its future relationship with council, in August with guest Bill Carter who gave advice based on his experience setting up a new trust for the Chatham Islands Museum.

# Mahara Gallery

## 5. Promote and encourage local community engagement with and access to, the arts, and lifelong learning about the arts.

*Service: Provide and promote a District focus for cultural expression and learning.*

*Target: Develop and implement an arts educational programme with special focus on youth (18 years and under).*

*Support achievement and excellence for local artists through exhibitions and events throughout the year.*

Our annual exhibition programme includes many opportunities for arts education at various levels, with artist's and curator's talks and workshops on a regular basis.

This was the fifth year for our major children's art and environment project, *Te whenua, the land*, working with Paraparaumu Beach Primary School. It reaches wide audiences and attracts new families and their children to become involved in the gallery on an ongoing basis.

*Kāpiti Artist's Focus* showcased eight invited local artists. Sara Boland, Liz Earth, Harriet Bright, Sebastien Jaunas, Dante Kennedy-George, Kimbra Taylor and Katie Sampson. It was part of the Kāpiti Arts Trail weekends on October 29 & 30 and November 5 & 6, and offered several artist's floortalks. This attracted greater Wellington as well as Kāpiti visitors and received wide regional and national publicity, including a story in AA magazine as well as *Stuff.co.nz*.

Over summer beside *the collecting passion, from Pablo Picasso to Sue Soo Mahara* also displayed artworks by local Waikanae Primary school children which were based on artworks they created in school inspired by artists Buck Nin, Robyn Kahukiwa and Peter Gossage. In May-June we displayed artworks by local children made for the Guardians of Kāpiti Marine Reserve logo design competition.

**TOTAL ATTENDANCE FOR PUBLIC PROGRAMMES IN AND ORGANISED BY MAHARA GALLERY: 3,972**

# Mahara Gallery

## PUBLIC PROGRAMMES HELD IN OR DEVELOPED BY MAHARA GALLERY SINCE 1 JULY 2016:

---

- 1) *Schools visits to Paraparaumu Beach School by Michelle Backhouse & Lindsay Rabbitt*  
Monday 4 July - Wednesday 6 July  
Tuesday 26 - Thursday 28 July  
Attendance: 320
- 2) *Floortalk on Contemplations of place, eight decades on, George Chance & Anton Maurer*  
Saturday 9 July, 3.30-4.30pm  
Attendance: 25
- 3) *Exhibition opening: Contemplations of place & Topophilia*  
Saturday 9 July, 5 pm  
Attendance: 85
- 4) *Winter Lecture series with Dr. Pamela Gerrish Nunn. Frances Hodgkins at the market*  
Thursday 14 July, 11am  
Attendance: 32
- 5) *School holiday workshops with Birgit Moffatt*  
Thursday 14 July, 11 am  
Attendance: 10
- 6) *School holiday workshops with Birgit Moffatt*  
Thursday 21 July, 11 am  
Attendance: 4
- 7) *Winter Lecture series with Dr. Pamela Gerrish Nunn. Frances Hodgkins, representations of men*  
Thursday 28 July, 11am  
Attendance: 30
- 8) *Winter Lecture series with Dr. Pamela Gerrish Nunn. Frances Hodgkins, The Mother and Child or Maternité*  
Thursday 4 August, 11am  
Attendance: 35
- 9) *Schools visits to Paraparaumu Beach School by poets Dean Hapeta & Lindsay Rabbitt*  
August  
Attendance: 60
- 10) *Kapanui school group visit to Topophilia*  
Wednesday 10 August  
Attendance: 40
- 11) *Friends of Mahara Gallery Event*  
Sunday 14 August, 12pm  
Attendance: 34
- 12) *Exhibition opening, Te Whenua, the land, children's art and environment project, in partnership with Nga Manu Nature Reserve and The Philipp Family Foundation*  
Friday 26 August, 1pm  
Attendance: 220
- 13) *Curator's Floor talk with Janet Bayly on Frances Hodgkins & Girolamo P. Nerli, Early Years*  
Saturday 10 September, 2pm  
Attendance: 6
- 14) *Bush Collage workshop with artist Michelle Backhouse*  
Saturday 1 October, 10.30 am - 12pm  
Attendance: 7
- 15) *Book launch of Te Whenua, the land, Paraparaumu Beach Children's Creations, Children's art and environment project in partnership with Nga Manu Nature Reserve and The Philipp Family Foundation*  
Saturday 1 October, 12pm  
Attendance: 46
- 16) *Opening of exhibition Kāpiti Artist's Focus: Sara Boland, Liz Earth, Harriet Bright, Sebastien Jaunas, Dante Kennedy-George, Kimbra Taylor and Katie Sampson and Living in Kāpiti; Kāpiti Coast Photographic Society.*  
Saturday 15 October, 5pm  
Attendance: 170
- 17) *Artist's floortalk in Kāpiti Artist's Focus with Kimbra Taylor, Harriet Bright and Liz Earth*  
Wednesday 25 October, 11am  
Attendance: 35
- 18) *Kāpiti Arts Trail weekend #1- including Katie Sampson drawing in the gallery both days*  
Saturday 29 - Sunday 30 October  
Attendance: 303
- 19) *Artist's floortalk in Kāpiti Artist's Focus with Sara Boland and Katie Sampson*  
Thursday 3 November, 11am  
Attendance: 2
- 20) *Kāpiti Arts Trail weekend #3- including Katie Sampson drawing in the gallery both days*  
Saturday 5 - Sunday 6 November  
Attendance: 246

# Mahara Gallery

- 21) *Friends of Mahara Film Fundraiser: Painters in the garden, from Monet to Matisse*  
Shoreline Cinema, Waikanae  
Thursday 10 November, 5.30pm  
Attendance: 38
- 22) *Mark Laurent and Brenda Liddiard, acoustic duo concert*  
Sunday 13 November, 2.30pm  
Attendance: 8
- 23) *Artist's floortalk in Kāpiti Artist's Focus with Graeme Hitchcock*  
Thursday 17 November, 11am  
Attendance: 7
- 24) *Artist's floortalk in Living in Kāpiti with Alison Viskovic, President of the Kāpiti Coast Photographic Society*  
Sunday 20 November, 1.30pm  
Attendance: 5
- 25) *Paul Ubana Jones acoustic concert*  
Saturday 26 November, 5pm  
Attendance: 29
- 26) *Friends of Mahara Gallery Event- Curator Janet Bayly talking about her recent travels and research on Frances Hodgkins*  
Sunday 27 November, 4pm  
Attendance: 40
- 27) *Exhibition opening of The collecting passion, from Pablo Picasso to Sue Soo, and our end of year Christmas party*  
Saturday 10 December, 5pm  
Attendance: 60
- 28) *Private event - Ryan Edwards premiering Innocent and Wise video*  
Tuesday 13 December, 7.30pm  
Attendance: 70
- 29) *Curator's Floor talk with Janet Bayly on The collecting passion, from Pablo Picasso to Sue Soo*  
Wednesday 14 December, 11 am  
Attendance: 12
- 30) *Bob Brockie; 60 years of drawing the line. Tracey Morgan - Whanaketanga/Evolution (newSpace) opening & blessing*  
Saturday 18 February 4.30-7.30pm  
Attendance: 136
- 31) *Bob Brockie floortalk*  
Wednesday 22 February 11am-12pm  
Attendance: 35
- 32) *Tracey Morgan weaving in the gallery*  
Saturday 25 February 10am-2pm  
Attendance: 50
- 33) *National Services Te Parerangi - art handling workshop*  
Monday 6 March, 9am-4pm  
Attendance: 23
- 34) *Floortalk 'from paint to pixels: contemporary technology in creative practice' with Tane Moleta, Lecturer in Interdisciplinary Design Technologies, School of Architecture, VUW. Machinetime\_Naturetime*  
Sunday 19 March, 2.30pm  
Attendance: 12
- 35) *Exhibition opening of Machinetime\_Naturetime*  
Sunday 19 March, 2.30pm  
Attendance: 12
- 36) *Friends of Mahara Event #3*  
Director Janet Bayly talking on American art tour  
Sunday 26 March, 4pm  
Attendance: 25
- 37) *Exhibition opening of An emerging talent, early works by Frances Hodgkins and Liminal by Lynda Mapplebeck*  
Saturday 8 April, 5pm  
Attendance: 60
- 38) *Morning tea for volunteers of gallery*  
Wednesday 12 April, 10.30am-12pm  
Attendance: 14
- 39) *Lego Club in partnership with Waikanae Library*  
Wednesday 12 April, 3-4pm  
Attendance: 14
- 40) *Children's holiday programme in partnership with Waikanae Library*  
Wednesday 19 April, 10.30-11.30am  
Attendance: 25
- 41) *Tea and Tales in partnership with Waikanae Library*  
Thursday 20 April, 10.30-11.45am  
Attendance: 25
- 42) *Children's holiday programme in partnership with Waikanae Library*  
Wednesday 26 April, 10.30-11.30am  
Attendance: 17

# Mahara Gallery

- 43) *Puppet show Biscuits and Bullets with Anna Bailey*  
Wednesday 26 April, 12-1 pm  
Attendance: 38
- 44) *Friends of Mahara Film fundraiser*  
Wednesday 26 April, 5.45pm  
Attendance: 24
- 45) *Floortalk with curator Victoria Robson on  
An emerging talent, early works by Frances  
Hodgkins, Hodgkins' birthday celebration*  
Friday 28 April, 11am  
Attendance: 50
- 46) *Presentation of Guardians of Kāpiti Marine  
Reserve logo design competition*  
Friday 28 April, 2pm  
Attendance: 29
- 47) *Friends of Mahara event #4  
Jil Hemming talking on Flight of Pollen game*  
Sunday 7 May, 4pm  
Attendance: 15
- 48) *Exhibition opening and floortalk for Lynette  
Rawlingson, Paintings*  
Sunday 14 May 2.30pm  
Attendance: 28
- 49) *Timo Timo storytelling and puppet show*  
Saturday 10 June, 10.30am  
Attendance: 6
- 50) *Lantern making workshop with artist Yvonne de  
Mille*  
Saturday 10 June, 1.30-3.30pm  
Attendance: 25
- 51) *Exhibition opening of Matariki Dawn and National  
Treasure/Whakapapa Panikoti*  
Saturday 10 June, 4pm  
Attendance: 108
- 52) *Lantern making workshop with artist Yvonne de  
Mille*  
Wednesday 14 June, 3.30-5pm  
Attendance: 25
- 53) *Lantern making workshop with artist Yvonne de  
Mille*  
Thursday 15 June, 3.30-5pm  
Attendance: 32
- 54) *Matariki in Mahara, community festival*  
Friday 16 June, 4-8pm  
Attendance: 900 total including Mahara Place  
and Waikanae Library events
- 55) *Anna Bailey Puppet show for Matariki at  
Mahara*  
Saturday 17 June 11am-12pm  
Attendance : 41
- 56) *Starweave Jam with Tracey Morgan for  
Matariki at Mahara*  
Saturday 17 June 11am-3pm  
Attendance: 36
- 57) *Zeal Musicians for Matariki at Mahara*  
Saturday 17 June 12.30-3.30pm  
Attendance: 48
- 58) *Raumati South School visit for He Kākano, Seed*  
Wednesday 21 June 1.30-2.30pm  
Attendance: 70
- 59) *Raumati South School visit for He Kākano, Seed*  
Thursday 22 June 1.30-2.30pm  
Attendance: 70

TOTAL ATTENDANCE = 3,972

# Mahara Gallery

## VISITOR AND DAY BOOK COMMENTS

---

### *EMERGING TALENT, EARLY WORKS OF FRANCES HODGKINS*

*Thanks for a first-class exhibition - Trish Olliff 5.5.17*

*Wonderful privilege - Glen, Waikanae Beach 15.4.2017*

*Inspiring to see her early figure watercolours. Sue Wild, Hutt Valley, 18.5.2017*

### *THE COLLECTING PASSION - FROM PABLO PICASSO TO SOO SUE*

*A super display, congratulations to the curator! Background music also well chosen - Diana Ferris 27.01.2017*

### *BOB BROCKIE 60 YEARS OF DRAWING THE LINE*

*Ah Bob! Wonderful stuff and lots of memories - Derek Morton, NSW Australia, 4.3.2017*

### *MATARIKI*

*Really awesome and creative - Gary Phillips, Levin, 24.7.2017*

### DAY BOOKS

*1.9.2016*

*Lindsay Missen dropped off jewellery and commented how light and refreshing gallery was with windows open and so much more light and inviting.*

*3.9.2016*

*Comment re art in Te Whenua "Children - we have a future!"*

*22.10.16*

*One lady remarked on how well connected with the community the gallery is.*

*28.1.2017*

*Sue Soo's daughter came in and chatted about how her mother used to send her children down to the supermarket to get cardboard boxes for their mother to paint on.*

*23.4.2017*

*Richard Thomson - director International Art Centre Auckland called in with his family, very complimentary, wanted to say hi.*